



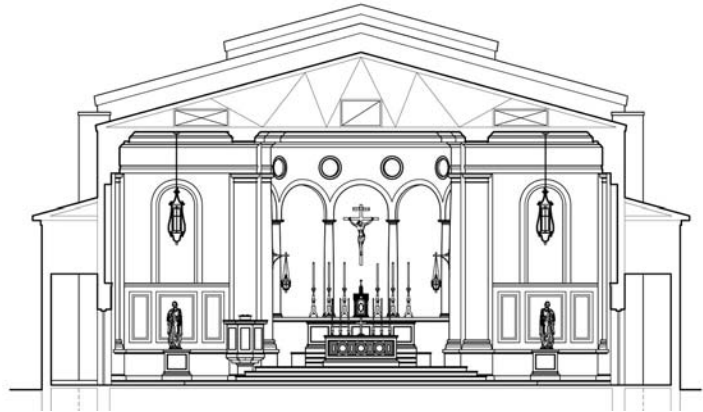
St. Ann's Parish Church Transformation

Budget

Total Project Cost \$3.1 million
 Cash-on-Hand \$1.3 million
 Committed Pledge Total \$535,000
 Diocesan Required Pledge Total \$855,000
New Pledges Required \$320,000

Schedule

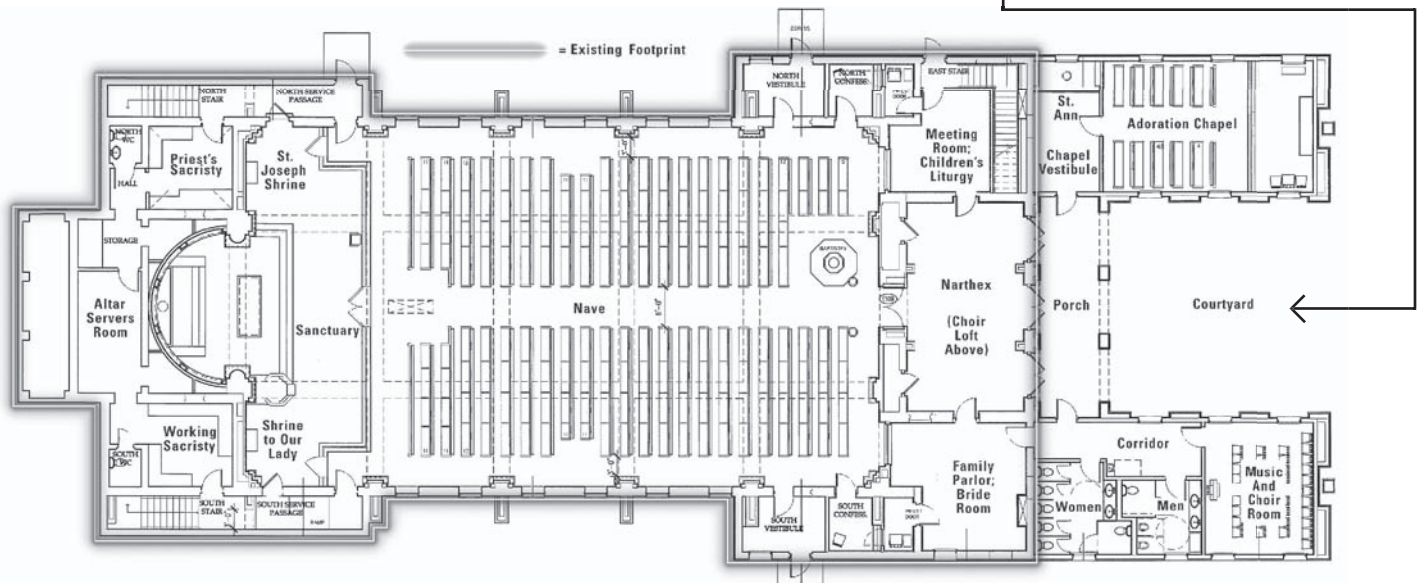
Schematic Design Complete
 Design Development July 2008
 Construction Begins October 2008
New Church Dedication October, 2009



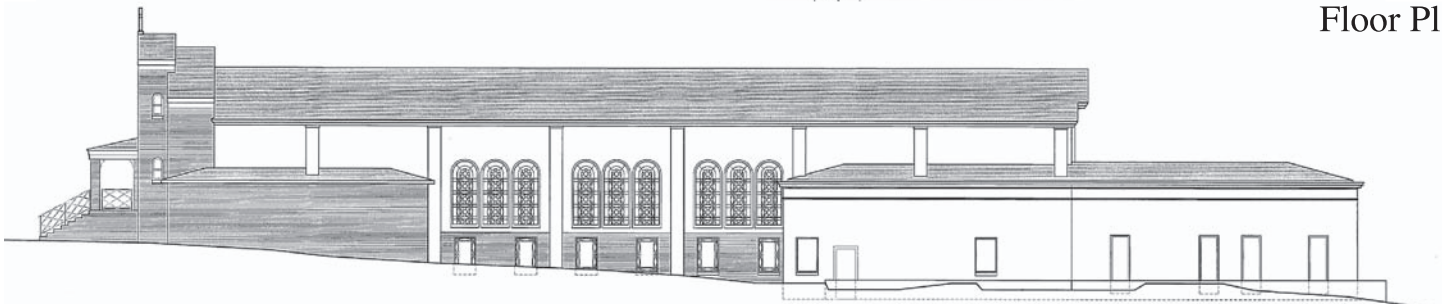
Sanctuary



Entrance



Floor Plan



South Side